



## Plug-in Coupling Type 960 up to 305 Nm

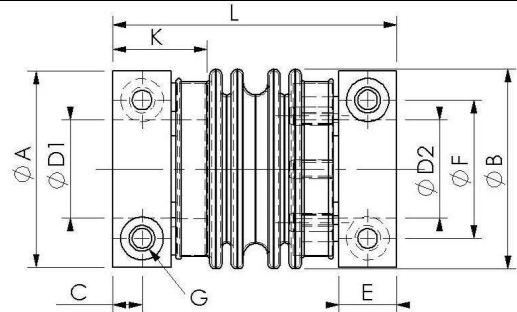
### Characteristics:

- Operation temperature of up to 500°C for short time, lasting up to 300°C
- No backlash and torsional rigidity
- Maintenance free and non-wearing

### Application:

- Machine tools
- Industrial robots
- Handling systems
- Winding machines
- Textile machines
- Wood- working- machines etc.

### TYPE 960 up to 305 Nm , mounting hub welded



Size	M <sub>N</sub> (Nm)	Spring constant in N/mm (lateral)	Spring constant in N/mm (axial)	Moment of inertia (ca. 10 <sup>-3</sup> kg m <sup>2</sup> )	Weight(ca. in kg)	Torsional rigidity (Torsion 10 <sup>3</sup> Nm/rad)	L	B	G (DIN EN ISO 4762) (Old DIN 912)	D1	D2 (plug-in hub)	C	K	F	A	E
56	50	171	102	0,2	0,7	19	81	56	M6	15...28	15...25	7,5	24	40	54	15
66	115	253	112	0,66	1,0	56	94	66	M8	22...32	22...32	9,5	31	45	64	19
82	190	249	87	1,6	1,7	94	113	82	M10	25...40	25...40	10,5	32	54	82	21
101	305	271	128	4,2	3,5	159	129	101	M12	30...50	30...45	12,0	36	68	99	24

<b>Shaft misalignment:</b>	<b>Allowed</b>	<b>lateral</b>	<b>axial</b>
	Assembly	0,8 mm	2mm
	Operational	0,2 mm	0,5mm

