



Metal bellows coupling TYPE 54 - up to 25 Nm

Characteristics:

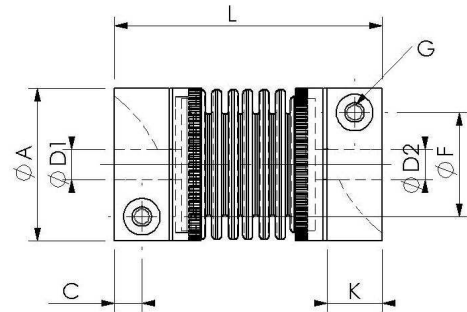
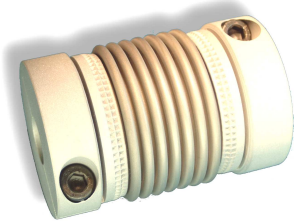
- Corrosion-resistant aluminium hubs, stainless steel metal bellows
- Operational temperature of up to 100°C (Higher temperatures please call)
- No backlash
- High rotational speeds possible
- Maintenance free and non-wearing

Application:

Predominantly used for systems with high torsional rigidity.

Available with plastic inserts for high impact resistance on request.

TYPE 54 up to 25 Nm, mounting hub pressed



Size	M _N (Nm)	Allowed shaft misalignment in mm (lateral)	Allowed shaft misalignment in mm (axial)	Moment of inertia (app. g cm ²)	Weight (app. in g)	Spring constant (Torque Nm/rad)	L	A	G (DIN EN ISO 4762) (Old DIN 912)	D1/D2	D1/D2 (Standard)	C	F
20	1,9	0,10	0,30	12	17	680	31,5	20	M2,5	3...8	6H7	3	13
25	3,7	0,13	0,40	37	38	1320	44	25	M3	3...12	6H7	4,5	17
40.1	9	0,17	0,50	305	105	3350	61	40	M5	6...20	10H7	5,5	27
40.2	14,5	0,17	0,50	312	110	5600	61	40	M5	6...20	10H7	5,5	27
55.1	25	0,17	0,50	920	250	10400	72	55	M6	14...28	16H7	7	40