

Metal bellows coupling, TYPE 53 - up to 25 Nm

Characteristics:

- Corrosion-resistant aluminium hubs, stainless steel metal bellows
- Operational temperature up to 100°C (please call us in case of higher temperatures)
- No backlash
- High rotational speeds possible
- Maintenance free and non-wearing

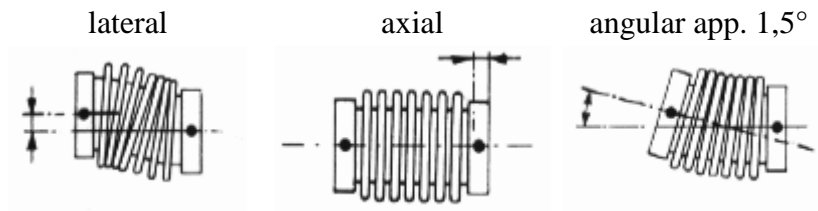
Application:

For installation in

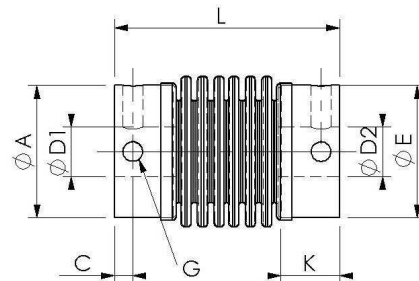
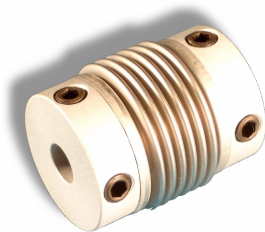
- Stepped motors
- Impulse drives
- Measuring systems
- Low output drives, etc.

Simple clamping is obtained by use of the clamping screws (DIN 916). The relationship between the moment of inertia and the torsion rigid is very pleasant, because of the thin metal bellows.

Shaft misalignment



TYPE 53 up to 25 Nm , mounting hub glued



Size	M _N (Nm)	Allowed shaft misalignment in mm (lateral)	Allowed shaft misalignment in mm (axial)	Moment of inertia (app. g cm ²)	app. weight (in g)	Spring constant (Torque Nm/rad)	L	A	G (DIN 916)	D1/D2	D1/D2 (Standard)	C	K	E
16	0,7	0,10	0,30	2	8	216	22	14,5	M3	3...8	4H7	2	6	11,5
20	1,9	0,10	0,30	9	12	680	24	18,5	M3	3...12	6H7	2	6	17,5
25	3,7	0,13	0,40	30	28	1320	35	24,5	M4	5...12,7	6H7	3	10	21,5
40.1	9	0,17	0,50	265	85	3350	55	39	M8	10...18	12H7	5	14	35
40.2	14,5	0,17	0,50	278	90	5600	55	39	M8	10...18	12H7	5	14	35
55.1	25	0,17	0,50	700	190	10400	65	55	M10	15...26	16H7	7	18	48