

Sprung coupling TYPE 330 - up to 900 Nm

Characteristics:

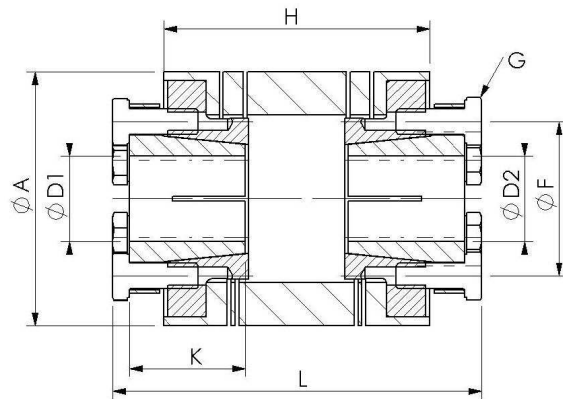
- Operational temperature of up to 200°C
- No backlash and torsional rigidity
- Maintenance-free and non-wearing
- Very high rotational speeds possible
- Full radius on spring slots
- Tapered bores and bushings are not slotted

Application:

For installing in

- Industrial robots
- Packing machines
- Machine tools
- Handling systems
- Textile machines
- Chain systems

TYPE 330 up to 900 Nm



Size	M_N (Nm)	Allowed shaft misalignment in mm (lateral)	Allowed shaft misalignment in mm (axial)	Spring constant in N/mm (lateral)	Spring constant in N/mm (axial)	Moment of inertia (app. 10^{-3} kg m ²)	Weight (app. in kg)	Torsional rigidity (10^3 Nm/rad)	L	A	6 x G DIN933 (60°displaced)	D1/D2	H	F	K
60	70	0,25	0,45	257	306	0,25	0,6	34	88	59	M6	15...24	63	36	32
70	115	0,25	0,45	380	342	0,65	1,0	53	94	69	M6	18...24	68	36	32
80	165	0,25	0,45	394	361	1,0	1,6	55	105	79	M6	20...38	75	51	35
90	240	0,25	0,45	407	402	2,2	2,3	82	115	89	M6	30...38	85	51	35
100	325	0,25	0,45	434	421	3,5	3,2	112	130	99	M8	26...48	94	65	42
120	550	0,30	0,45	512	490	6,8	4,6	187	140	119	M8	30...48	102	65	42
140	900	0,30	0,45	608	558	14,0	6,7	285	156	139	M10	35...60	107	82	50