

Sprung coupling TYPE 31 - up to 30 Ncm

Characteristics:

- Compact dimensions
- Aluminum alloy
- Potential-free installation possible
- Maintenance-free and non-wearing
- Operational temperature of up to 200°C
- Low moment of inertia
- Full radius on spring slots

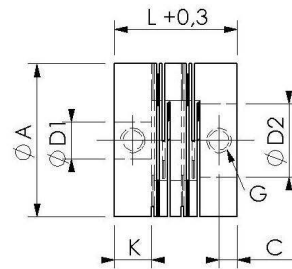
Application:

For installing in

- Stepped drivers
- Synchro resolvers
- Potentiometer
- Tacho-generators, etc.

Available with keyway according to DIN 6885.

TYPE 31 up to 30 Ncm



Size	M_N (Ncm)	Rotation speeds up to (min^{-1})	Allowed shaft misalignment in mm (lateral)	Allowed shaft misalignment in mm (axial)	Moment of inertia (app. g cm^2)	Weight (app. in g)	Spring constant (Torque Nm/rad)	L	A	G (DIN 916)	D1/D2	D1/D2 (Standard)	C	K
20	25	15000	0,15	0,3	7,1	11	84	16	20	M3	4...12	6H7	2,25	4,3
25	30	15000	0,15	0,3	21,8	22	126	20	25	M4	6...12	6H7	3	6