

Flexible Split coupling TYPE 300 - up to 200 Nm

Characteristics:

- Can be fitted without adjusting shafts
- Very high rotational speeds possible
- No backlash
- Operational temperature of up to 200°C
- Full radius on spring slots
- Aluminum alloy

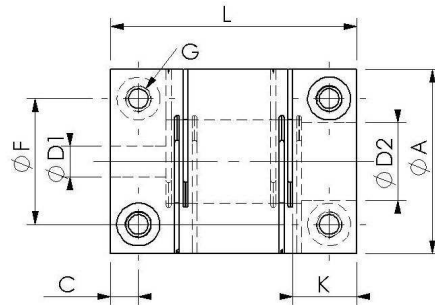
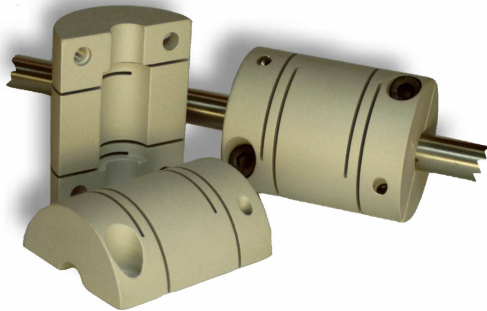
Application:

- Industrial robots
- Handling devices
- Packing machines
- Textile machines
- Woodworking machines etc.

Sizes 20, 30 and 40 are suitable for installation in:

- Stepped drivers
- Stepped motors
- Tachometer generators u. s. w.

TYPE 300 - up to 200 Nm



Size	M_N (Nm)	Allowed shaft misalignment in mm (lateral)	Allowed shaft misalignment in mm (axial)	Moment of inertia (app. g cm ²)	Torsional rigidity (Nm/rad)	Weight (app. in g)	L	A	G (DIN EN ISO 4762) (Old DIN912)	D1/D2	C	F	K
20	0,2	0,25	0,30	11	0,30	17	26	20	M2,5	3...8	3	13	6
30	3,7	0,25	0,30	87	1,8	60	40	30	M4	5...12,7	4,5	20,5	9
40	6,5	0,30	0,30	345	3,7	135	50	40	M5	8...20	5,5	27	11
60	43	0,30	0,30	1850	31	580	83	59	M6	16...30	7,5	41	15
80	105	0,35	0,35	7500	48	1550	104	79	M8	20...45	10	55	20
100	200	0,35	0,35	29000	98	3000	130	99	M12	25...50	12	68	24